

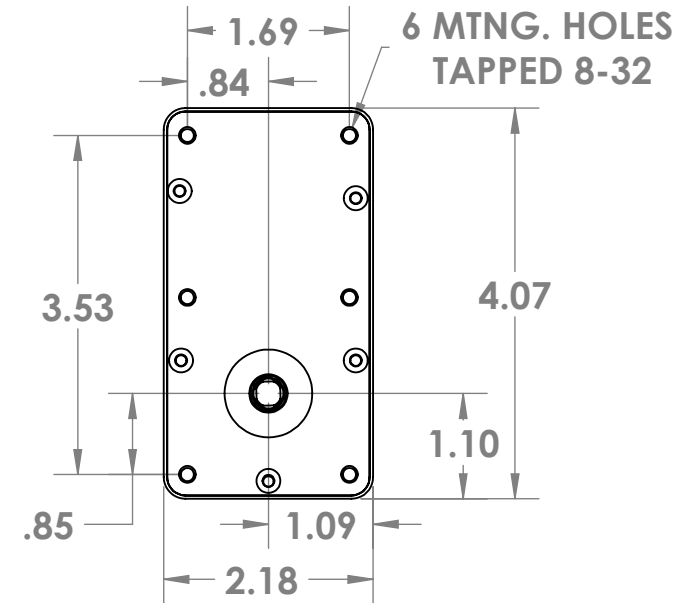
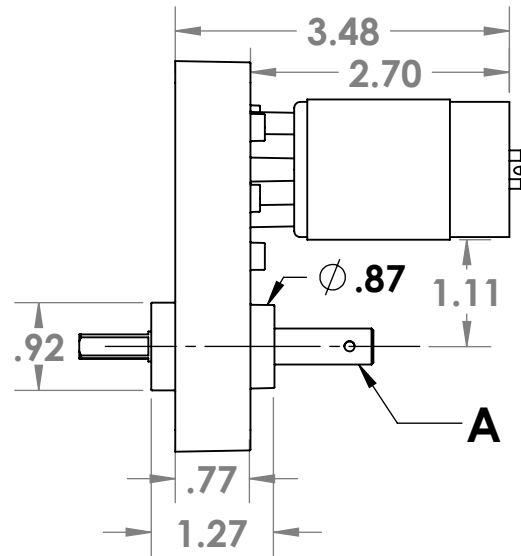
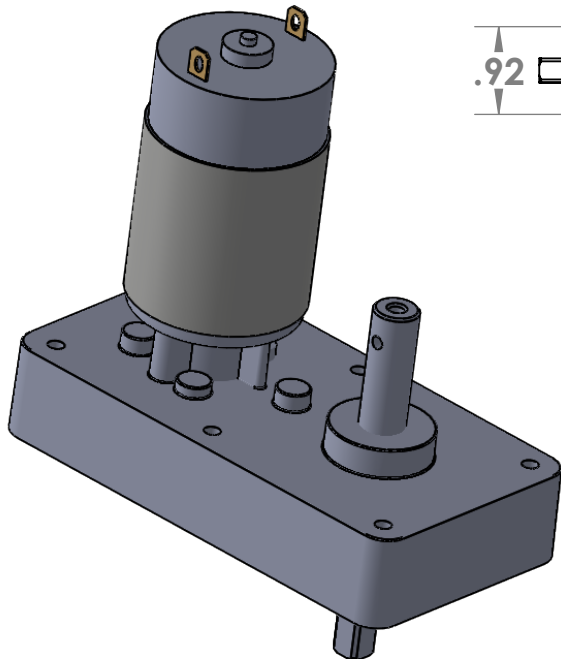
## DC REVERSIBLE GEARMOTOR

### A- OUTPUT SHAFT LENGTH & DIAMETER PER CUSTOMER REQUIREMENTS

- OUTPUT SPEEDS FROM 1-800 RPM
- OUTPUT TORQUE TO 100 IN. LB.
- CONTINUOUS DUTY
- 6-30 V.D.C.

## OPTIONS

- HEAVY DUTY NEEDLE BEARINGS
- ADJUSTABLE CAMS & LIMIT SWITCHES
- ELECTRONIC NOISE ATTENUATORS
- TORQUE-LIMITING SLIP-CLUTCH



UNLESS OTHERWISE SPECIFIED:	NAME	DATE	REX ENGINEERING GEARMOTORS	
DIMENSIONS ARE IN INCHES	DRAWN	RPH	8/1/17	TITLE:
TOLERANCES:	CHECKED			
FRACTIONAL $\pm$	ENG APPR.			
ANGULAR: MACH $\pm$ BEND $\pm$	MFG APPR.			
TWO PLACE DECIMAL $\pm .02$	Q.A.			
THREE PLACE DECIMAL $\pm .005$	COMMENTS:			
INTERPRET GEOMETRIC TOLERANCING PER:				
MATERIAL			SIZE	DWG. NO.
FINISH			<b>A</b>	<b>AX</b>
				REV
			SCALE: 1:2	SHEET 1 OF 1
DO NOT SCALE DRAWING				