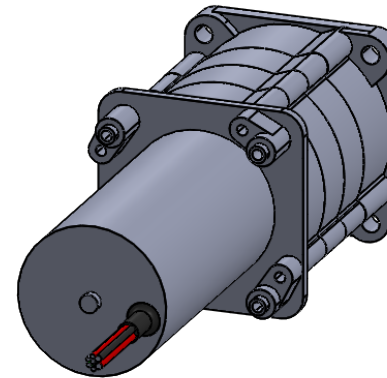
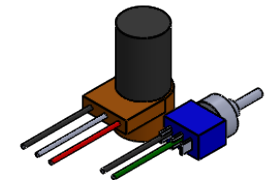


**PLANETARY BRUSHLESS DC GEARMOTOR**

- **A - VARIES DEPENDING ON GEAR RATIO  
2.35" FOR EXTERNAL CONTROLS  
3.35" FOR INTERNAL CONTROLS (SHOWN)**
- **B - OUTPUT SHAFT DETAILS PER CUSTOMER REQUIREMENTS**
- **A - VARIES DEPENDING ON GEAR RATIO  
6.15" IN CONFIG. SHOWN**
- **12 OR 24 VDC**
- **ROLLER BEARING SUPPORT FOR OUTPUT SHAFT**
- **BALL-BEARING MOTOR CONSTRUCTION**
- **NEMA 23 MOUNTING INTERFACE**
- **ALL STEEL GEARING AVAILABLE**
- **GEARING OPTIONS FROM  
1/10-1000 RPM**
- **MAX POWER OUTPUT - 13 WATTS (AC) OR 25 WATTS (DC)**



**OPTIONAL SPEED  
& DIRECTIONAL  
CONTROLS**



|   |  |           |          |                                 |  |
|---|--|-----------|----------|---------------------------------|--|
| UNLESS OTHERWISE SPECIFIED:   |  | NAME      | DATE     | <b>REX ENGINEERING</b>          |  |
| DIMENSIONS ARE IN INCHES<br>TOLERANCES:<br>FRACTIONAL ±<br>ANGULAR: MACH ± BEND ±<br>TWO PLACE DECIMAL ±<br>THREE PLACE DECIMAL ± |  | DRAWN     | RPH 5/23 |                                 |  |
| INTERPRET GEOMETRIC<br>TOLERANCING PER:   |  | CHECKED   |          | SIZE                            |  |
| MATERIAL  |  | ENG APPR. |          | DWG. NO.                        |  |
| FINISH  |  | MFG APPR. |          | REV                             |  |
| DO NOT SCALE DRAWING  |  | Q.A.      |          | A PBL                           |  |
|   |  | COMMENTS: |          | SCALE: 1:2 WEIGHT: SHEET 1 OF 1 |  |