

## PMDC REVERSIBLE GEARMOTOR

**A - OUTPUT SHAFT DIAMETER & LENGTH  
PER CUSTOMER REQUIREMENTS**

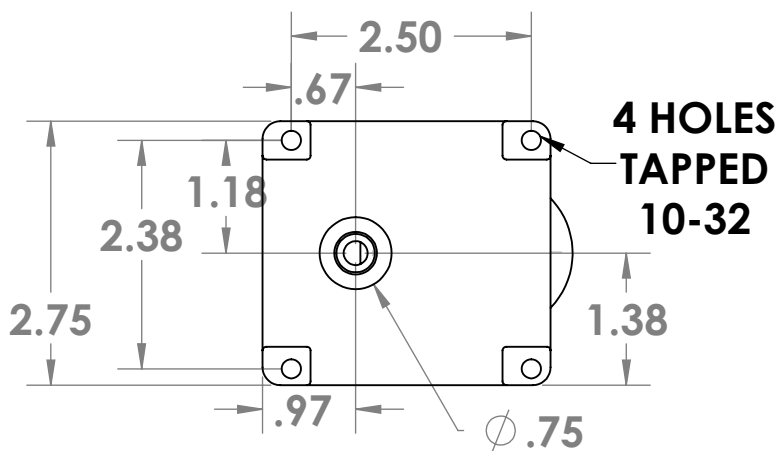
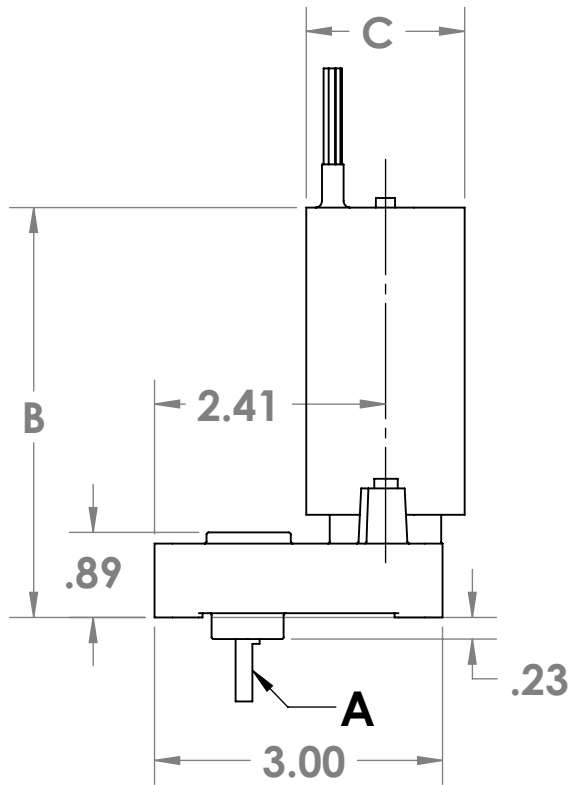
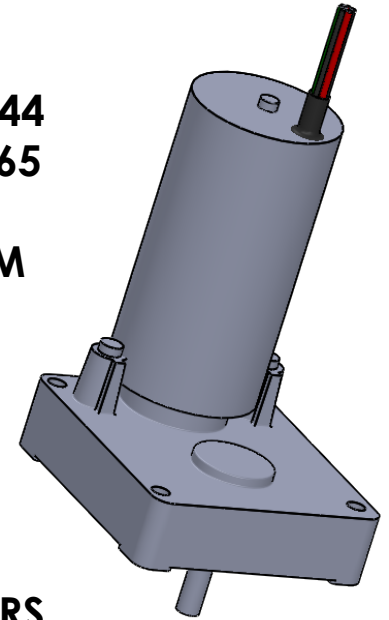
**EXTERNAL CONTROL: B = 3.3, C = 1.44**

**INTEGRAL CONTROL: B = 4.3, C = 1.65**

- **OUTPUT SPEEDS FROM 3-500 RPM**
- **OUTPUT TORQUE TO 50 IN. LB.**
- **CONTINUOUS DUTY**
- **6-30 VDC**

### OPTIONS:

- **HEAVY DUTY NEEDLE BEARINGS**
- **ELECTRONIC NOISE ATTENUATORS**
- **3PPR ENCODER**
- **BRUSHLESS DC WINDING**
- **SPEED & DIRECTIONAL CONTROLS**



UNLESS OTHERWISE SPECIFIED:

DIMENSIONS ARE IN INCHES  
TOLERANCES:  
FRACTIONAL ±  
ANGULAR: MACH ± BEND ±  
TWO PLACE DECIMAL ± .02  
THREE PLACE DECIMAL ± .005

INTERPRET GEOMETRIC  
TOLERANCING PER:

MATERIAL

FINISH

DO NOT SCALE DRAWING

NAME DATE

DRAWN RPH 7/11/17

CHECKED

ENG APPR.

MFG APPR.

Q.A.

COMMENTS:

**REX ENGINEERING GEARMOTORS**

TITLE:

SIZE DWG. NO. REV

**A HBL**

SCALE: 1:2 WEIGHT: SHEET 1 OF 1