

BRUSHLESS DC GEARMOTOR

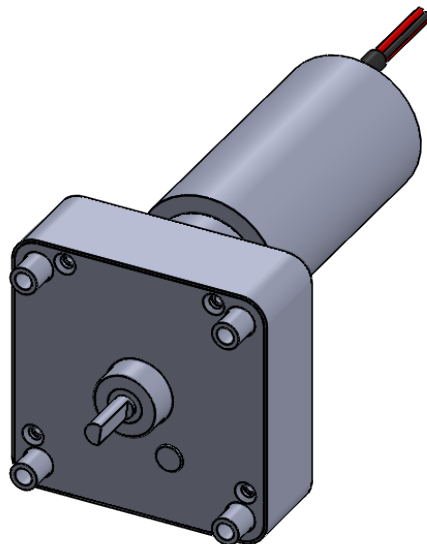
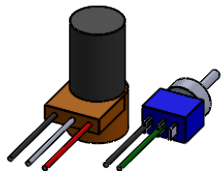
A - OUTPUT SHAFT DIAMETER & LENGTH PER CUSTOMER REQUIREMENTS

**B - MOUNTING BOSS OPTIONS:
.090", .190", .330"**

EXTERNAL CONTROL: C = 3.98, D = 1.44
INTEGRAL CONTROL: C = 5.0, D = 1.65

- 12 OR 24 VDC
- OUTPUT SPEEDS FROM 1-800 RPM
- OUTPUT TORQUE UP TO 75 IN. LB. DEPENDING ON SPEED
- CONTINUOUS DUTY

SPEED & DIRECTIONAL CONTROLS



OPTIONS

- HEAVY DUTY NEEDLE BEARINGS
- BUILT-IN DRIVE CIRCUIT
- SPEED & DIRECTIONAL CONTROL (SHOWN)
- TACH & DIRECTION OUTPUT SIGNALS

REX ENGINEERING GEARMOTORS

SCALE: 1:2

DWG. NO.

CLBL