

BRUSHLESS DC REVERSIBLE GEARMOTOR

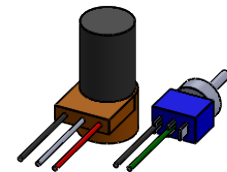
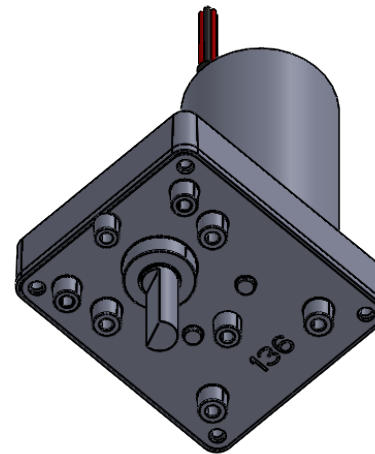
**A - OUTPUT SHAFT DIAMETER & LENGTH
PER CUSTOMER REQUIREMENTS**

**EXTERNAL CONTROL: B = 3.6, C = 1.44
INTEGRAL CONTROL: B = 4.6, C = 1.65 (SHOWN)**

- OUTPUT SPEEDS FROM 2-500 RPM
- OUTPUT TORQUE TO 50 IN. LB.
- CONTINUOUS DUTY
- 6-30 V.D.C.

OPTIONS:

- HEAVY DUTY NEEDLE BEARINGS
- ELECTRONIC NOISE ATTENUATORS



**SPEED &
DIRECTIONAL
CONTROLS
(OPTIONAL)**

UNLESS OTHERWISE SPECIFIED:		NAME	DATE	REX ENGINEERING GEARMOTORS	
DIMENSIONS ARE IN INCHES TOLERANCES: FRACTIONAL ± ANGULAR: MACH ± BEND ± TWO PLACE DECIMAL ± .02 THREE PLACE DECIMAL ± .005		DRAWN	RPH 8/8/17		
INTERPRET GEOMETRIC TOLERANCING PER:		CHECKED		SIZE DWG. NO. REV	
MATERIAL		ENG APPR.			
FINISH		MFG APPR.		SCALE: 1:2	
DO NOT SCALE DRAWING		Q.A.		SHEET 1 OF 1	
		COMMENTS:			